

# WELCOME

## SALTWATER P-9 COLLEGE

**Prep 2024 Information Session  
Wednesday 8 November 2023  
5.00pm via WEBEX**



**SALTWATER  
P-9 COLLEGE**

*wisdom begins with wonder*



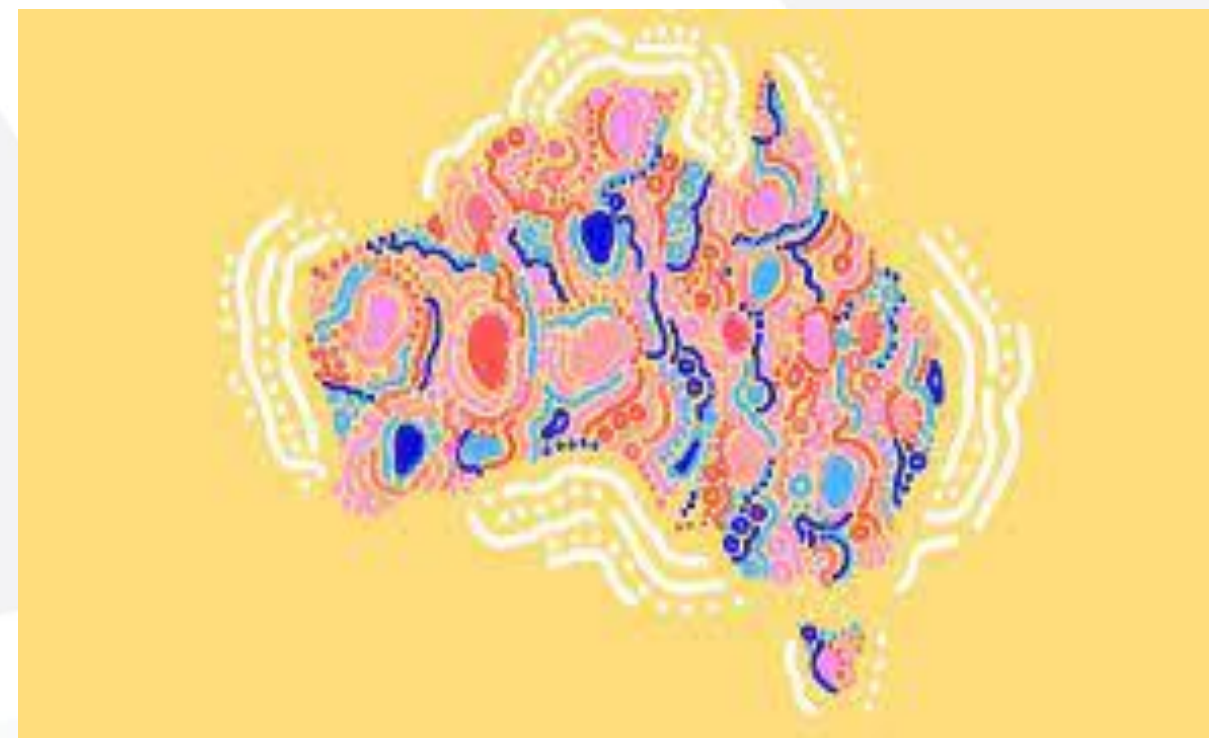
# WELCOME

## ACKNOWLEDGEMENT OF COUNTRY

**We'd like to begin by acknowledging the Traditional Owners of the land on which we work and meet today.**

**In particular, the Bunurong people of the Kulin Nation as the traditional custodians of the land, and pay our respect to their Elders past, present and emerging.**

**We are truly grateful for this opportunity.**



**SALTWATER**  
P-9 COLLEGE

*wisdom begins with wonder*

# Introductions

- Jackie Daniali – Principal



- Taxia Katsouranis – Prep Assistant Principal



- Sarah Mason – Prep Leading Teacher



- Gramatiki Alexiou – Prep Leading Teacher



- Amanda Palombi - Wellbeing Assistant Principal



- Ryan Ma – School Improvement Assistant Principal



# School History

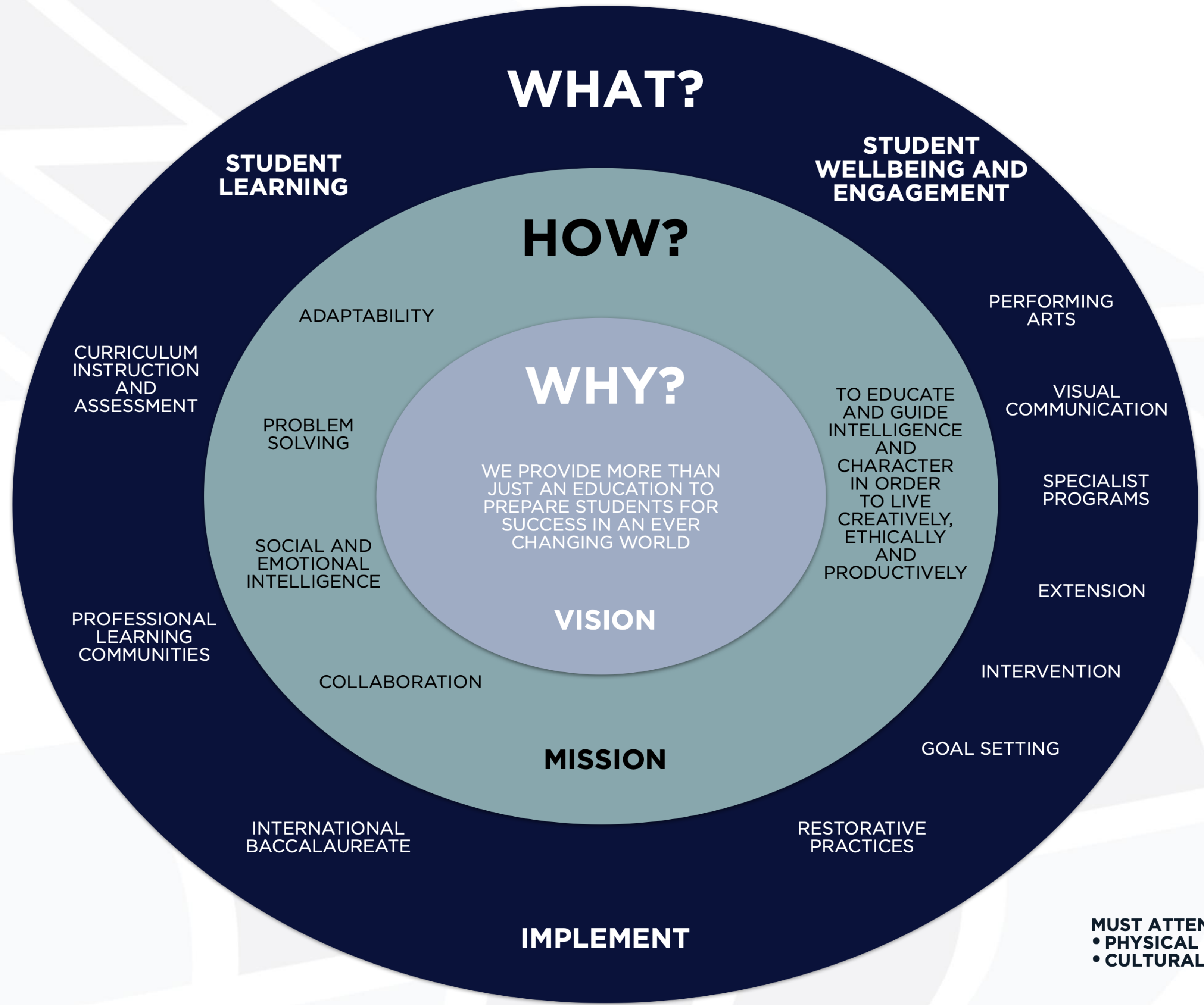
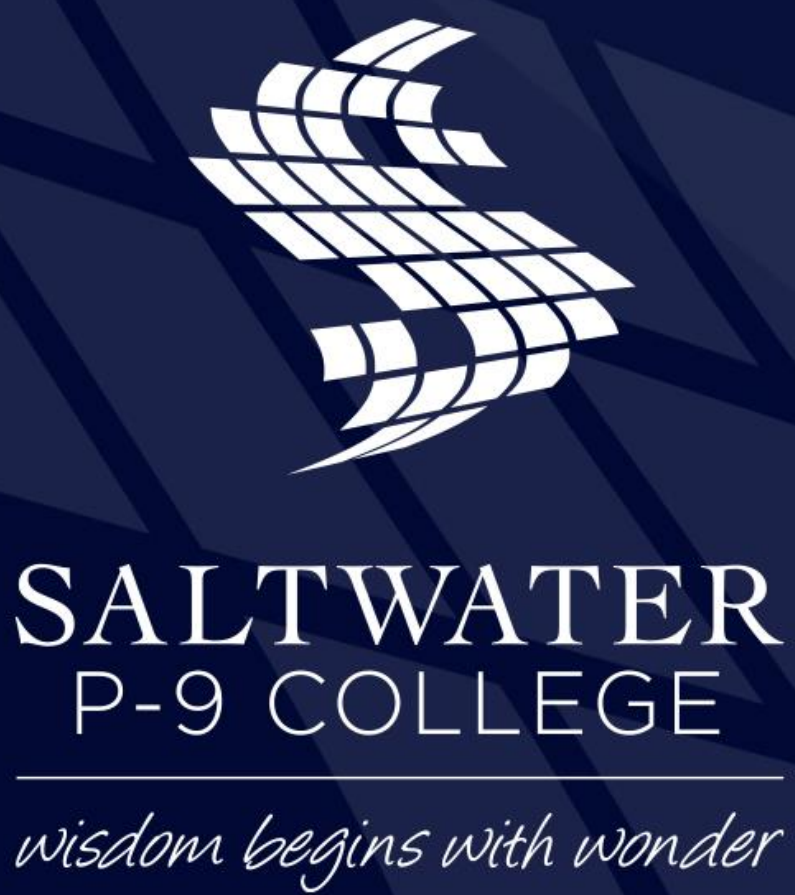


Our school turns 5  
A brief history of the school.

## Capital Buidling Works

In the 2023 State Budget, Saltwater was allocated \$34 million to upgrade and expand our buildings. Expected to be completed 2025/2026.





**MUST ATTEND TO:**

- PHYSICAL ENVIRONMENT
- CULTURAL ENVIRONMENT

# Saltwater College Values

We are Principled, Caring Communicators who value:

**Excellence** (pursuing and achieving our best, always improving)

**Resilience** (the ability to recover from challenges and adapt to change)

**Respect** (showing regard and appreciation for self, others, and property)

These values were developed with our school community in 2022, as part of our focus on School Wide Positive Behaviour Support (SWPBS).

**Motto: Wisdom Begins With Wonder**

**SCHOOL-WIDE POSITIVE BEHAVIOUR EXPECTATIONS**

**CLASSROOM**

**EXCELLENCE**

- We listen to our teachers and our classmates
- We learn with enthusiasm and sustain our love of learning throughout life
- We know how to learn independently and with others

**RESILIENCE**

- We put in our best effort
- We take risks and challenge ourselves
- We work to understand our strengths and weaknesses to support learning and personal development

**RESPECT**

- We use equipment correctly, are organised and prepared
- We keep our classrooms tidy
- We arrive to class on time ready for learning
- We follow instructions

**SALTWATER**  
P-9 COLLEGE

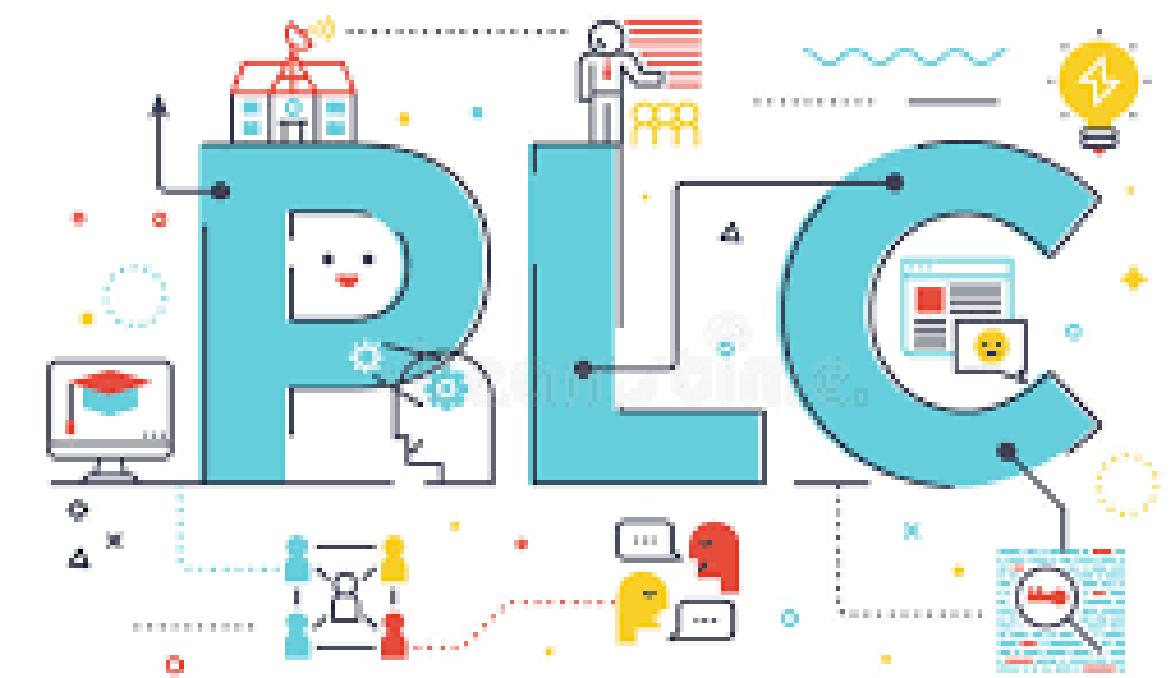
*wisdom begins with wonder*



# Saltwater College is a Professional Learning Community

At Saltwater College, we focus on the three big ideas of a Professional Learning Community (PLC):

1. All students learning at high levels
2. A focus on collaboration
3. A focus on results



SALTWATER  
P-9 COLLEGE

*wisdom begins with wonder*

# Timetable

School starts at 8:30am (classroom open 8.20m) and finishes 2:40pm.

Timetable A

Timetable B

High School



SALTWATER  
P-9 COLLEGE

*wisdom begins with wonder*



# School Uniform

- School uniform is to be worn daily.
- School Sports uniform is to be worn when the class have PE and can also be worn on Fridays.
- Hats to be worn in Term 1 and Term 4.
- Link for ordering uniforms: <https://www.noone.com.au/school/saltwater-p-9-college-point-cook/shop>



# Uniform Options

**SALTWATER**  
P-9 COLLEGE  
*wisdom begins with wonder*



< ≡  Saltwater P-9 College S... 🔍



**Saltwater P-9 College Second hand uniform >**

# Curriculum Overview

## Victorian Curriculum

- English

Reading/Viewing, Writing, Speaking & Listening

- Mathematics

Number & Algebra, Measurement & Geometry,  
Statistics & Probability

- Wellbeing Program

Resilience, Rights and Respectful Relationships,  
Social Emotional Learning



SALTWATER  
P-9 COLLEGE

*wisdom begins with wonder*

# International Baccalaureate Primary Years Programme



## ❖ What is International Baccalaureate?

“... The International Baccalaureate (IB) is a not-for-profit foundation, motivated by its mission to create a better world through education”

## ❖ IB Mission Statement

“... The International Baccalaureate aims to develop inquiring, knowledgeable and caring young people who help to create a better and more peaceful world through intercultural understanding and respect...”

Our programmes encourage students across the world to become active, compassionate and lifelong learners who understand that other people, with their differences, can also be right....



SALTWATER  
P-9 COLLEGE

*wisdom begins with wonder*

# Specialist Programs

- Spanish Language
- Physical Education and Health
- Visual Arts
- Performing Arts Music and Dance
- Robotics- part of class program
- One to One devices



All students will participate our specialist program weekly.  
Our classes rotate between blocks of teaching Spanish, Music and Dance.

# Wellbeing and Engagement

Your child's wellbeing is paramount to learning.

- It's important to share with us any needs or concerns, in order to best support your child's academic, social, emotional and physical needs.
- Disability Inclusion funding provides assistance to schools to further support eligible students with a disability who require substantial and/or extensive adjustments.
- A process of assessment is undertaken to satisfy the level of adjustment and support required.



SALTWATER  
P-9 COLLEGE

*wisdom begins with wonder*

# Kinder To School Transitions

## Two transition sessions in November 2023.

- Kinder to school transition sessions aim to make the process of moving to school as positive as possible.
- An opportunity to become familiar with the layout of the school, classrooms, facilities, staff and other students.
- Help reduce anxiety on the first day of school.
- During the transition session, parents are welcome to join us in the staffroom.

## Transition Morning 1:

Wednesday 15 November 9am – 10.15am (Prep A,B,C,D,E)

Thursday 16 November 9am – 10:15am (Prep F,G,H,I,J,K)

## Transition Morning 2:

Wednesday 29 November 9am – 10.15am (Prep A,B,C,D,E)

Thursday 30 November 9am – 10:15am (Prep F,G,H,I,J,K)



SALTWATER  
P-9 COLLEGE

*wisdom begins with wonder*

# Kinder To School Transitions

## Transition Morning 1:

- Our future Preps will participate in 'get to know you and our school' activities and a reading session with a Prep teacher.
- Information was sent about your child's temporary class placement on Friday 3 November.

## Transition Morning 2:

- We are hoping that our future Preps will meet their teacher for 2024 and their prospective classmates.
- Dependent on recruitment of staffing and completion of our workforce plan.
- Students will participate in learning activities as a class with their teacher.
- Information will be sent to families regarding classes and teachers, before this day.



SALTWATER  
P-9 COLLEGE

*wisdom begins with wonder*



# Transition Information

Transition information will be provided in November 2023, via email.

## Information Contained:

- School Booklist
- Parent Contributions/fees
- Uniform
- After School Care
- Sports/Excursion details



SALTWATER  
P-9 COLLEGE

*wisdom begins with wonder*

# Take Home Satchel Information

Your child will bring their satchel home after their 2nd Prep transition day!

Wednesday 29 November 9am – 10.15am (Prep A,B,C,D,E,F)

Thursday 30 November 9am – 10:15am (Prep G,H,I,J,K,L)



SALTWATER  
P-9 COLLEGE

*wisdom begins with wonder*

# Take Home Satchel Information

Your child will be required to bring their reading satchel to school each day.

Inside your child's reading satchel they will receive;

Meet your teacher letter

Saltwater Notepad

Jim the Seahorse text

Pencil



**SALTWATER**  
P-9 COLLEGE

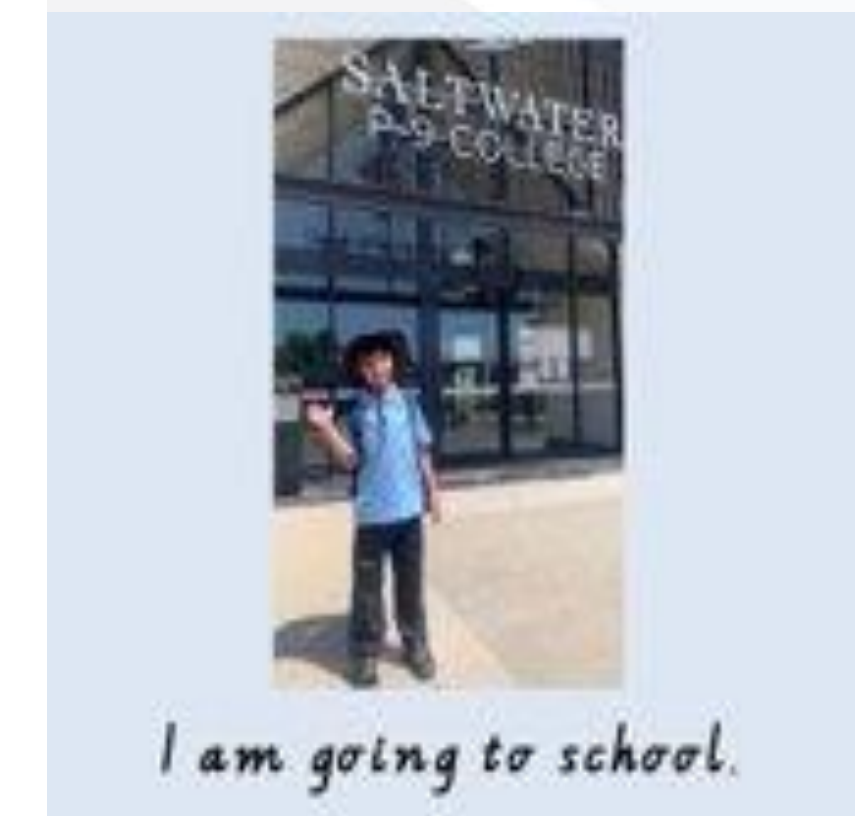
*wisdom begins with wonder*

# Take Home Satchel Information 2024

Reading Satchel and take home book



Prep Social Story



Special Key Ring HFW & ABC



Alphabet placemat



# Reporting to Parents

- **School Box**

Student work samples and annotations shared with families

- **End of Semester Reports**

Reporting against the Victorian Curriculum at the end of Term 2 and Term 4

- **Parent-Teacher-Student Three Way Conferences**

Term 2 and Term 4: Student-Led Conferences to discuss student progress and goals.



SALTWATER  
P-9 COLLEGE

*wisdom begins with wonder*

# Saltwater Platforms

1

Newsletter

2

Website

3

Schoolbox

4

Xuno  
Platform

5

Booking Prep Entry  
Assessment Interviews

6

Social Media  
FB Instagram



SALTWATER  
P-9 COLLEGE

*wisdom begins with wonder*

# Prep Assessments in 2024

The Department of Education has mandated an entry assessment for all Victorian students beginning Prep.

This means that we require all our families to book in their child for a one hour assessment.

Prep children are not required at school on these days (unless you have booked in for the one hour assessment).

On these days, we ask parents to book in for mandated Literacy and Numeracy Assessments. Drop your child off for their assessment and then pick them up at the end of the one hour session. Further information will be available after the second transition day in regard to booking these.

## **Term 1 Prep Assessments in 2024, by appointment, no school for Prep:**

- Wednesday 31 January
- Wednesday 7 February
- Wednesday 14 February
- Wednesday 21 February
- Wednesday 28 February – Teacher Planning and Data Day

# Out of School Hours Care at Saltwater

## OSHC

If you require before or after school care,

Before school from 6.30am,

Afterschool from 2.40-6.30pm,

Please contact

Big Childcare Saltwater

[saltwater@bigchildcare.com](mailto:saltwater@bigchildcare.com)

**big**  
**CHILDCARE**



SALTWATER  
P-9 COLLEGE

*wisdom begins with wonder*



# General Info

- ❖ Canteen online booking system – 'Quick Cliq'
- ❖ Lunchboxes – snack, fruit, lunch.
- ❖ Action plans (nurses at school, medication and changes go to nurses)
- ❖ Change of clothes – puddles, accidents



SALTWATER  
P-9 COLLEGE

*wisdom begins with wonder*

**Change of Clothing**

Dear Parents,  
Spills and accidents can occur in school. Please send in a complete change of clothing inside the attached bag. Be sure to label the bag with your child's name. Your child's clothes will be stored in the classroom in the event they are needed.

Your child needs:



pants  
(no shorts)



shirt



under pants



socks

Thank you 😊

**SCHOOL ASTHMA ACTION PLAN**

This record is to be completed by parents/carers in consultation with their child's doctor. Please circle the appropriate information and print your answers clearly in the blank spaces where indicated. The information on this Plan is confidential. All staff that care for your child will have access to this information. The school will only disclose this information to others after they have obtained your consent if it is to be used elsewhere. Please contact the school at any time if you need to update this Plan or you have any questions about the management of asthma at school. If no Asthma Action Plan is provided by the parent/carer, the staff will treat asthma symptoms as outlined in the policy 'Asthma Attacks: Treatment' as part of the 'School Policy and Advisory Guide' - Department of Education and Early Childhood Development.

**STUDENT'S PERSONAL DETAILS**

Student's Name \_\_\_\_\_ Gender  M  F  
 Date of Birth \_\_\_\_/\_\_\_\_/\_\_\_\_ Year/Class \_\_\_\_\_ Teacher \_\_\_\_\_  
 Ambulance Membership Yes  No  Membership No. \_\_\_\_\_  
 What other health management plans does this student have, if any? \_\_\_\_\_  
 Emergency Contact (e.g. Parent/Carer) \_\_\_\_\_ PHOTO  
 Name \_\_\_\_\_ Relationship \_\_\_\_\_  
 Ph: (H) \_\_\_\_\_ (W) \_\_\_\_\_ (M) \_\_\_\_\_  
 Doctor \_\_\_\_\_ Ph: \_\_\_\_\_

**USUAL ASTHMA ACTION PLAN**

Usual signs of student's asthma:  
 Wheeze  Tight Chest  Cough  Difficulty breathing  Difficulty talking  Other \_\_\_\_\_

Signs student's asthma is getting worse  
 Wheeze  Tight Chest  Cough  Difficulty breathing  Difficulty talking  Other \_\_\_\_\_

Student's Asthma Triggers  
 Cold/flu  Exercise  Smoke  Pollens  Dust  Other \_\_\_\_\_

**Asthma Medication Requirements** (including relievers, preventers, symptom controllers, combination)

Name of Medication (e.g. Ventolin, Fluticoid)	Method (e.g. puffer & spacer, turbuhaler)	When and how much? (e.g. 1 puff in morning and night, before exercise)

Does the student need assistance taking their medication? Yes  No   
 If yes, how? \_\_\_\_\_

**Managing Exercise Induced Asthma (EIA)**

If exercise is a trigger for this student they should follow these steps to prepare for exercise:  
 1. Take their blue reliever or doctor recommended medication 5-10 minutes before warm up. Warm up appropriately before exercise or activity and always cool down following activity and be alert for asthma symptoms after exercise.

If a student gets EIA during exercise they should:  
 1. Stop the exercise or activity and commence asthma first aid as per the student's asthma action plan. If asthma symptoms persist, continue first aid. The student **should not** return to the activity and school staff should inform parents/carers of the incident.

© The Asthma Foundation of Victoria April 2012

# Thank You!

**Questions will be answered on the  
transition days.**



**SALTWATER  
P-9 COLLEGE**

*wisdom begins with wonder*